

HYDRAULIC BOLT TENSIONING

A15 Steam Turbine Hydraulic Closure System

The Application

- Steam Turbine connected in combined cycle with GE 9FA gas turbine
- HP casing with an outer casing and split internal casing
- A single casing combined IP:LP
- Stud sizes from 2.5" to 6"
- The closure system remains on site for the duration of the outage
- Fast accurate, efficient & reliable
- Colour coded disc insert aids tool size selection

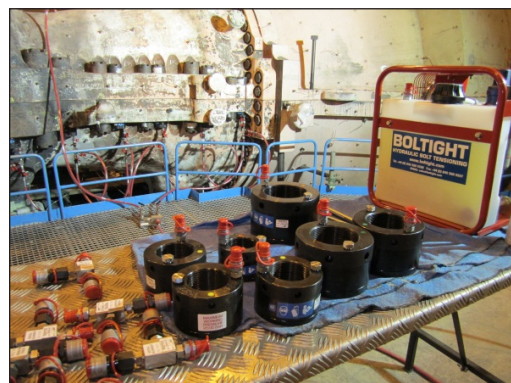


The Closure System

- Saves time on tops on tops off
- Cold system thus eliminates heating and cooling times
- Uses existing bolts
- Direct retrofit - no modifications needed
- Maximum load in available space
- Compliments IBH for final tightening

The Benefits

- Shorter outage-potential = more MW generation
- Tops on:Tops off completed quickly in one shift
- 56 hours time saving over outage period
- Better accountability and responsibility with one shift/one team
- Uniform and accurate compression of casing
- Repeatability of accurate stud loading
- No sub contract work
- Improved Quality planning
- Quicker final tightening
- Easy to use "The Crew Like it"



BOLTIGHT[®]
HYDRAULIC BOLT TENSIONING

BOLTIGHT is the UK
Registered Trade Mark
of Boltight Limited