

HYDRAULIC BOLT TENSIONING

Autoclave

The Application

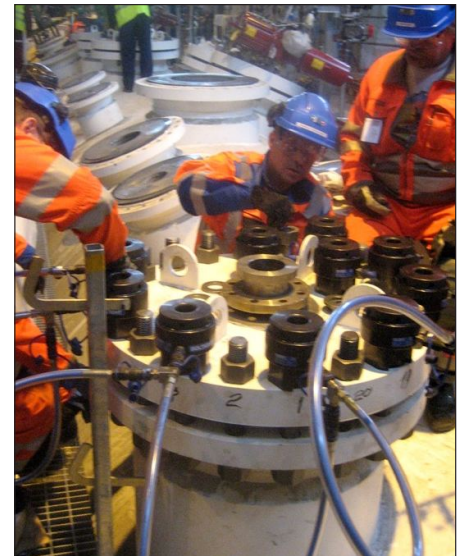
- Installation of Autoclave unit
- Various flange sizes – nozzles and access manways
- 50% simultaneous bolt tensioning
- Various stud sizes

The Standard Tooling System

- 1500 bar topside tooling
- Standard off the shelf design to suit most standard pipe flanges
- Common cylinder accommodates a range of thread sizes when used with appropriate puller, bridge and socket
- Fast simultaneous closure
- Easy piston return
- Various options of hydraulic connection
- Can be used with a variety of pump and hose systems

The Benefits

- Time saving with one shift/one team
- Uniform and accurate compression of flanges
- Repeatability of accurate stud loading
- Improved Quality planning
- Quicker final tightening
- Zero leakage



BOLTIGHT®
HYDRAULIC BOLT TENSIONING

BOLTIGHT is the UK
Registered Trade Mark
of Boltight Limited