

## HYDRAULIC BOLT TENSIONING

### Load Cells

At Boltight we design and manufacture load cells to suit your application. The load cells are designed to work at either 700 bar, 1000 bar, 1500 bar, 2000 bar or 2500 bar oil pressure. Boltight supplies all of the ancillary equipment, such as flexible hoses, quick disconnect couplings and hand or air driven hydraulic pumps necessary to operate the load cells.



*M125 threaded bore load cells.  
Top entry hydraulic connection. Locking collars  
to retain load. 700 bar max pressure.*



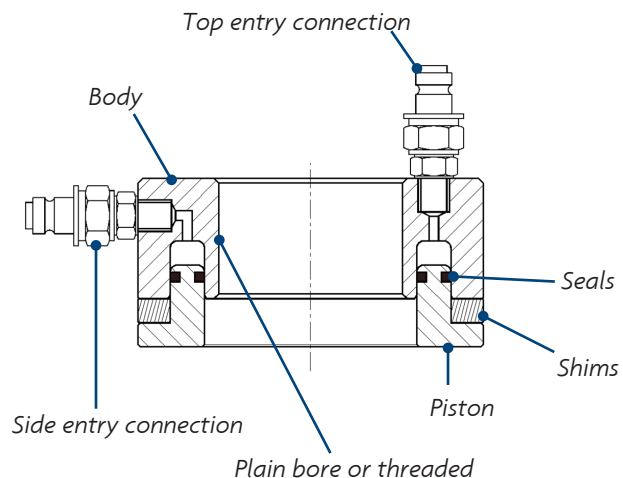
*M76 plain bore load cell. Side entry hydraulic  
connection. 2500 bar max pressure.*

Boltight load cells conform to the requirements of the European Pressure Equipment Directive and are CE Marked where called for by the directive. A comprehensive Health & Safety Operating and Instruction Manual accompanies all Boltight load cells, giving easy to follow step by step instruction in the safe use of the product.

Send application details to the address below and Boltight will respond with their best product offering

### Load Cell Features

- Custom designed and built
- Operating pressures from 700 bar to 2500 bar
- Easy to use
- Threaded or plain bore
- Side or top entry hydraulic connection
- Colour coded
- Shims or locking collars to retain the load
- Conforms to European Pressure Equipment Directive



**BOLTIGHT<sup>®</sup>**  
HYDRAULIC BOLT TENSIONING

BOLTIGHT is the UK  
Registered Trade Mark  
of Boltight Limited

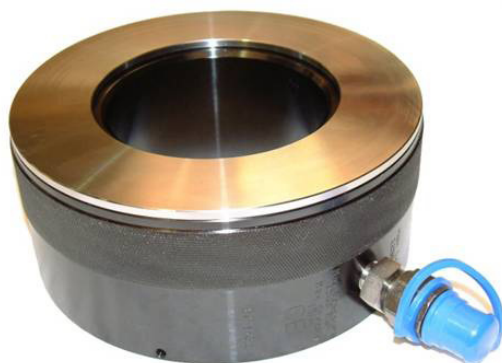
## HYDRAULIC BOLT TENSIONING

### Load Cells



52 mm plain bore load cell  
Side entry hydraulic connection  
Flanged piston  
1500 bar max pressure  
383 kN maximum load  
15 mm piston stroke

Replacement for SPS XL05 load cell



93 mm plain bore load cell  
Side entry hydraulic connection  
Flanged piston  
1500 bar max pressure  
1296 kN maximum load  
15 mm piston stroke

Replacement for SPS XL12 load cell

Boltight manufactures load cells to suit your application.

The load cells shown above are replacements for SPS XL load cells. They are designed to work at 1500 bar oil pressure and have a maximum piston stroke of 15 mm. The load cells were supplied to a water turbine manufacturer.

Boltight supplies all of the ancillary equipment, such as flexible hoses, quick disconnect couplings and hand or air driven hydraulic pumps necessary to operate the load cells.

Boltight load cells conform to the requirements of the European Pressure Equipment Directive and are CE Marked where called for by the directive.

A comprehensive Health & Safety Operating and Instruction Manual accompanies all Boltight load cells, giving easy to follow step by step instruction in the safe use of the product.



**BOLTIGHT<sup>®</sup>**  
HYDRAULIC BOLT TENSIONING

BOLTIGHT is the UK  
Registered Trade Mark  
of Boltight Limited