

HYDRAULIC BOLT TENSIONING

TSR Range - Spring Return Bolt Tensioners

The long stroke Boltight spring return range of 1500 bar (21,750 psi) bolt tensioning tools have been developed to improve productivity and operator safety. The spring return mechanism provides automatic piston retraction after depressurising the system at the end of the tensioning sequence. This ensures the tools are ready for the next operational sequence of tensioning, commencing from zero stroke.

The design of the tools is ideally suited for use on common flange sizes. The geometry of the tool and the high load tool capacity ensures that the location is assured and loading of the bolting application is easily achieved.

The TSR range uses the same hydraulic pump and hoses as other Boltight bolt tensioning tools, including the Xtra load range. As well as the piston retraction, the tools are designed with safety features including a positive piston stop and maximum stroke indicator.

Additional optional features include gear drive nut rotation and oversize threading to accommodate galvanised bolting.

Overview

- Lightweight and powerful tool design
- Automatic piston retraction
- Maximum stroke indicator
- Positive piston stop
- Single hydraulic connection
- Optional twin hydraulic connection
- 1500 bar (21,750 psi) operating pressure
- Long life and low maintenance
- CE Marked
- Pressure test certification
- H&S operating manual included
- Servicing available
- Optional maintenance contract
- Optional gear drive nut rotation
- Optional swivel connectors
- Oversized thread available
- 24/7 technical support
- Pumps, hoses and fitting ex stock
- Special designs available

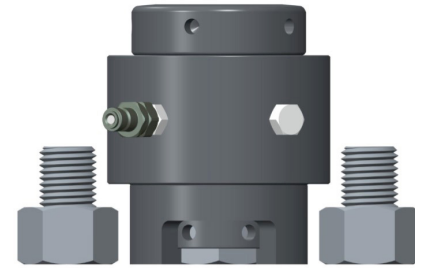
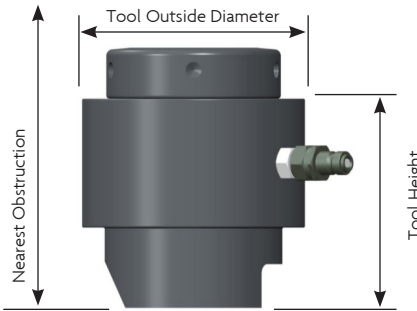


BOLTIGHT®
HYDRAULIC BOLT TENSIONING

BOLTIGHT is the UK
Registered Trade Mark
of Boltight Limited

HYDRAULIC BOLT TENSIONING

TSR Range - Spring Return Bolt Tensioners



Tool No:	Bolt Diameter		Hydraulic Area mm ²	Max. Load		Tool Outside Diameter mm	Tool Height mm	Nearest Obstruction mm	Tool Weight	
	inch	mm		kN	lbf				kg	lbs
TSR 0	3/4	M20	1,070	160	35,970	66	93	142	1.4	3.1
	7/8	M22					93	144		
TSR 1	1	M24	1,870	280	62,950	87	117	175	2.7	6.0
	1-1/8	M27					117	178		
TSR 2	1	M24	3,000	450	101,160	103	117	175	4.1	9.0
	1-1/8	M27					117	178		
	1-1/4	M30					120	184		
	1-3/8	M33					123	190		
		M36					126	196		
TSR 3	1-1/4	M33	4,400	660	148,370	118	123	192	5.4	11.9
	1-3/8	M36					126	198		
	1-1/2	M39					130	204		
	1-5/8	M42					133	211		
TSR 4	1-1/2	M39	6,670	1,000	224,810	141	132	212	8.4	18.5
	1-5/8	M42					135	218		
	1-3/4	M45					139	225		
	1-7/8	M48					142	231		
	2	M48					145	231		
TSR 5	2	M52	10,000	1,500	337,210	176	148	248	13.8	30.4
	2-1/4	M56					154	258		
	2-1/2	M60					161	262		
	2-3/4	M64					161	273		
		M68					167	283		
TSR 6	2-3/4	M72	16,670	2,500	562,020	219	167	297	23.0	50.7
	3	M76					171	308		
	3-1/4	M80					180	312		
	3-1/2	M85					180	323		
TSR 7	3-1/2	M90	21,340	3,200	719,390	252	186	341	32.0	70.5
	3-3/4	M95					186	346		
		M100					192	356		
							192	356		
							199	356		

NOTES

- 1500 bar (21,750 psi) operating pressure
- Piston stroke 10 mm except TSR 0 – 8 mm
- Tool weight excludes puller
- Pressure test certification
- CE Marked
- H&S operating manual provided
- Pumps, hoses and fittings - ex stock
- Optional thread forms

Table of data for guidance only



BOLTIGHT®
HYDRAULIC BOLT TENSIONING
BOLTIGHT is the UK Registered Trade Mark of Boltight Limited